



Cutters



PART #

ITEM

1-905560

MicroDuct Straight Cutter

Used to make a 90° cut of the MicroDuct. Will also cut whatever is inside the MicroDuct.



PART #

ITEM

1-907162

MicroDuct Round Cutter

Used to cut only the MicroDuct and not what is inside the MicroDuct.

Conduit Cutters



PART #

ITEM

1-900418

Conduit Slitting Tool

Used to make a 90° cut of the MicroDuct. Will also cut whatever is inside the MicroDuct.



PART #

ITEM

1-900414

Large Circular Conduit Cutter

For Scoring The Sheath Of Armored FuturePath.

Ratchet Shears



PART #

ITEM

1-900420

Ratchet Shears

Able to cut FuturePath.
Duct Size Range $\frac{3}{4}$ " – $1 \frac{1}{4}$ " (0.83" – 1.66")



PART #

ITEM

1-900421

Ratchet Shears

Able to cut FuturePath.
Duct Size Range $1 \frac{1}{2}$ " – 2" (1.66" – 2.375")



Splice Kits



PART #	ITEM
1-406175	Straight splice protection sleeve kit for 7-Way 16mm x 13mm

Items included: 7 – 16mm couplers, 3" x 30" protection sleeve, vinyl and sealing tapes and a water resistant locate wire connector.



PART #	ITEM
1-406174	Straight splice protection sleeve kit for 4-Way 16mm x 13mm

Items included: 4 – 16mm couplers, 3" x 28" protection sleeve, vinyl and sealing tapes and a water resistant locate wire connector.



PART #	ITEM
1-406173	Straight splice protection sleeve kit for 2-Way 16mm x 13mm

Items included: 2 – 16mm couplers, 2.5" x 20" protection sleeve, vinyl and sealing tapes and a water resistant locate wire connector.



PART #	ITEM
1-406172	Straight splice protection sleeve kit for 7-Way 12.7mm x 10mm

Items included: 7 – 12.7mm couplers, 3" x 24" protection sleeve, vinyl and sealing tapes and a water resistant locate wire connector.



PART #	ITEM
1-406171	Straight splice protection sleeve kit for 4-Way 12.7mm x 10mm

Items included: 4 – 12.7mm couplers, 2.5" x 20" protection sleeve, vinyl and sealing tapes and a water resistant locate wire connector.



PART #	ITEM
1-406170	Straight splice protection sleeve kit for 2-Way 12.7mm x 10mm

Items included: 2 – 12.7mm couplers, 2.5" x 16" protection sleeve, vinyl and sealing tapes and a water resistant locate wire connector.

MICRO ACCESSORIES

www.duraline.com



Couplers



PART #	ITEM
1-907148	18mm Coupler



PART #	ITEM
1-908243	16mm Coupler



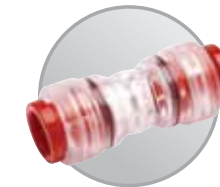
PART #	ITEM
1-907145	12.7mm Coupler



PART #	ITEM
1-907144	12mm Coupler



PART #	ITEM
1-907168	12.7mm x 12mm Transition Coupler



PART #	ITEM
1-907143	10mm Coupler



PART #	ITEM
1-909011	10mm x 8.5mm Transition Coupler



PART #	ITEM
1-908741	8.5mm x 8mm Transition Coupler



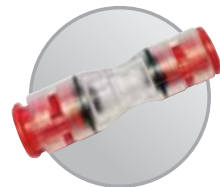
PART #	ITEM
1-907142	8.5mm Coupler



PART #	ITEM
1-908743	8mm x 5mm Transition Coupler



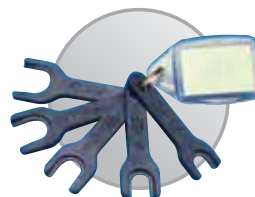
PART #	ITEM
1-907141	7mm Coupler



PART #	ITEM
1-907170	7mm x 5mm Transition Coupler



PART #	ITEM
1-907140	5mm Coupler



PART #	ITEM
1-909053	MicroDuct Coupler Collet Unlocking Tool

MICRO ACCESSORIES

www.duraline.com



Customer Service
800-847-7661

End Caps



PART #	ITEM
1-907234	18mm End Cap



PART #	ITEM
1-908247	16mm End Cap



PART #	ITEM
1-907153	12.7mm End Cap



PART #	ITEM
1-907152	12mm End Cap



PART #	ITEM
1-907151	10mm End Cap



PART #	ITEM
1-908811	8.5mm End Cap



PART #	ITEM
1-907150	7mm End Cap



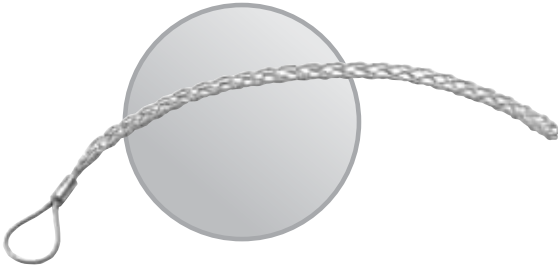
PART #	ITEM
1-907149	5mm End Cap



PART #	ITEM
1-909053	MicroDuct Coupler Collet Unlocking Tool

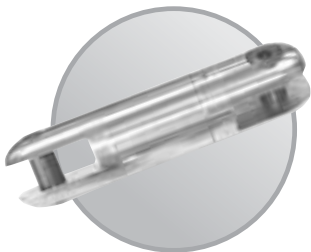


Pulling Grips – Single Eye Cable Grips



PART #	SIZE RANGE	LATTICE WEAVE	LATTICE LENGTH	OVERALL LENGTH	APPROX BREAKING STRENGTH (lbs)	UOM	WEIGHT EACH
908925	0.75 - 1.00"	Single	16"	20"	5,600	each	0.50 lbs
908926	1.00 - 1.50"	Single	18"	24"	7,840	each	1.50 lbs
908927	1.50 - 2.00"	Double	21"	29"	11,200	each	2.0 lbs
908928	2.00 - 2.50"	Double	24"	34"	11,200	each	2.0 lbs
908929	2.50 - 3.50"	Double	27"	39"	13,440	each	2.5 lbs
908930	3.50 - 4.50"	Double	27"	39"	15,680	each	2.5 lbs

Swivels



PART #	ITEM
903841	Pull-Back Swivel

Pull-Back Swivel with a pulling strength of 5,400 – 9,000 lbs.

Clamps

PART #	ITEM
1-905776	Two Shield Bonding Clamps

With Two Studs And Two Locknuts For Insertion Under Armoring Shield

PART #	ITEM
1-406590	Stabilizing Coupler Clamp

For Aerial FuturePath (Box of 10)